

Architect: Marnix van der Meer, Rene de Korte, Rolf Bruggink, Edwin Deen
Firm: Zecc Architecten BNA
Location: Eemskanaal, Groningen
Area: 25 large dwellings
Photographer: Studio for Architectural Photography

Quay Houses Groningen



On the South-east side of Groningen an industrial area has become indistinct. Here for a large constructing area has become available. A few existing buildings on the waterside stay as they are. On the other area's big enclosed building-blocks will be realised. These building-blocks have a large common courtyard and a constructed parking place.

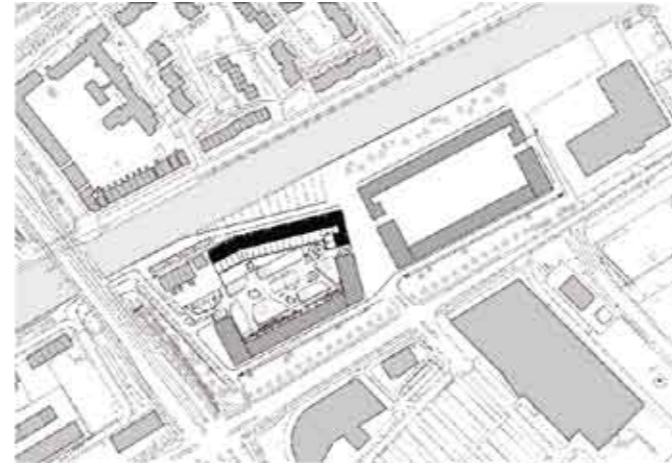
The building-block contains an apartment building designed by Mecanoo, and a row houses along the water, designed by Zecc Architecten. The difference in height between these two elements is distinguished.

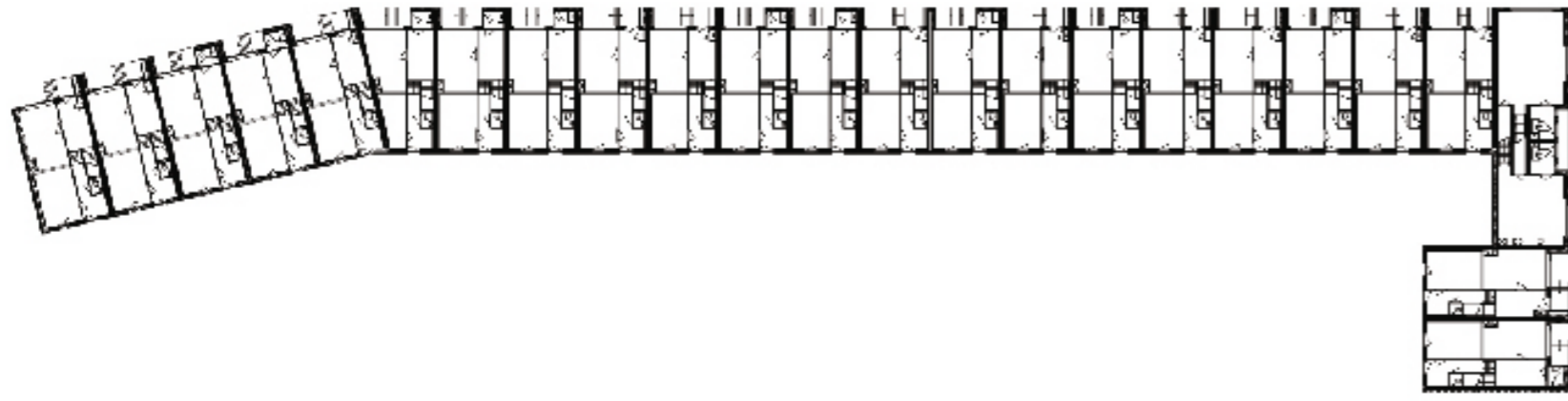
Our design regards houses with four floors. The houses are being build in a row, but all of them have an individual touch. This individual touch is realised by the sculptural design of the entrance stairs, the vertical articulation of the houses and the different sorting of brick used for the façade's.

The lower two levels are realised as a split-level. This is to create enough privacy on the road side and on the same time realise a nice high kitchen on the, private, terrace side.

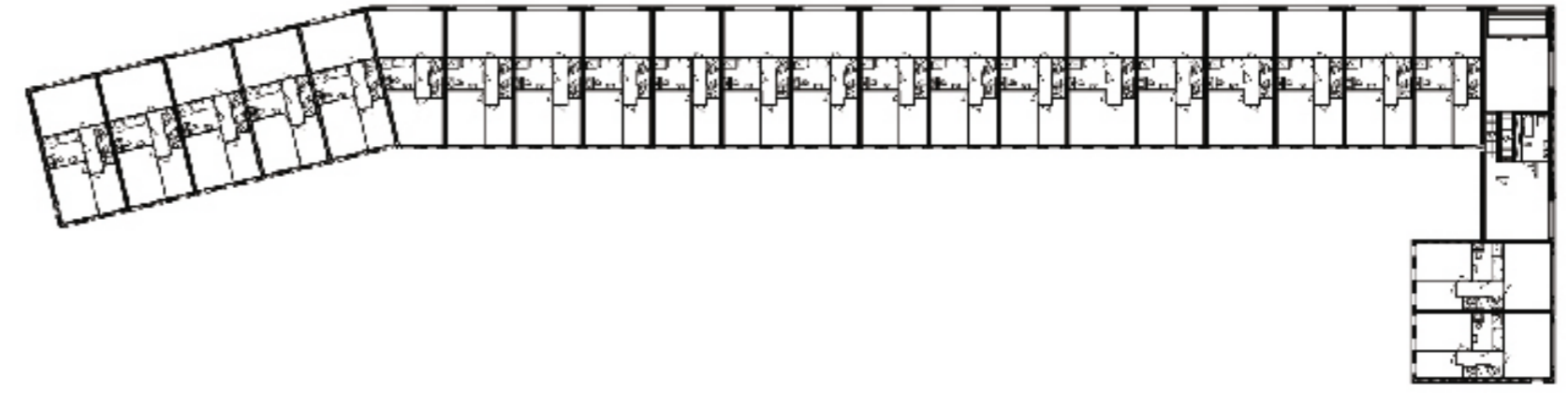
The houses are strong serially in terms of building system, but offer space for many requirements: additional roof terrace on the south side or view on the water, possibility to choose a larger bay window in the front or a larger entrance area at the ground level.

As corner solution is chosen for weaving two properties together, so both can enjoy the qualities of the Eems canal.

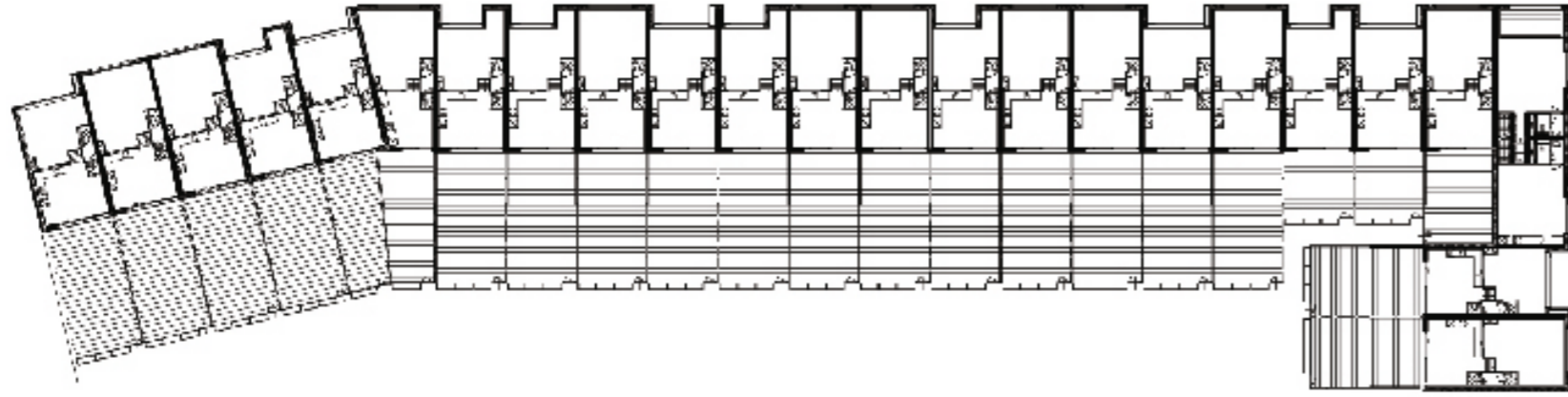




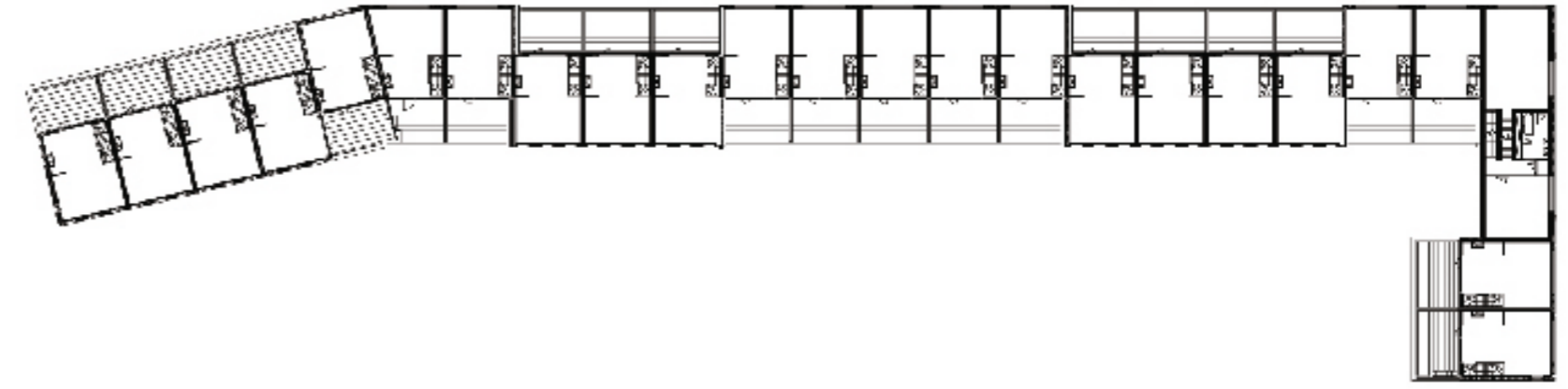
Overzicht begane grond / Ground floor



Overzicht 2e verdieping / third floor



Overzicht 1e verdieping / 2nd floor



Overzicht 3e verdieping / fourth floor



