

Zecc Architecten

VILLA IN THE WOODS

Soest, The Netherlands

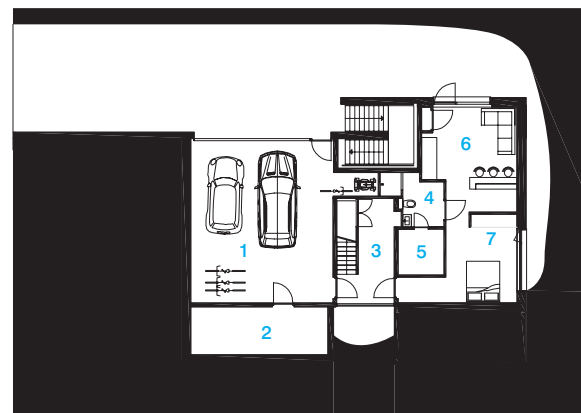
Amid rough pine trees, in a sloping area between forest and dunes, Villa in the Woods appears like a rock breaking through the ground. The sculptural building interacts with its natural surrounds, 'pushing' out certain volumes into the landscape. Terraces are configured in such a way that, instead of being part of the garden design, they are transformed into an extension of the residence.

There is also a strong dialogue between building and landscape through the use of materials. The stony façade anchors the villa to the ground while the pine wood sections of the exterior directly reference the surrounding pine forest. The combination of form and material becomes an abstract response to the context of the landscape.

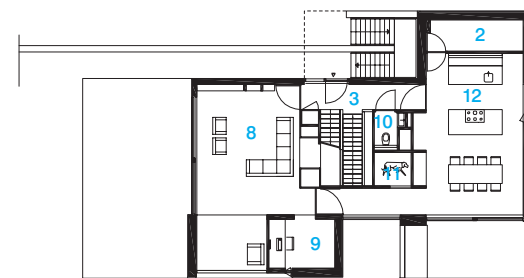
An important theme in the villa is the spatiality between the three floors. A void runs from the lower ground to the first floor, connecting all three levels. Parapets and stairs run smoothly through the void, creating a sculptural connection between the three floors.

Photography Cornbread Works

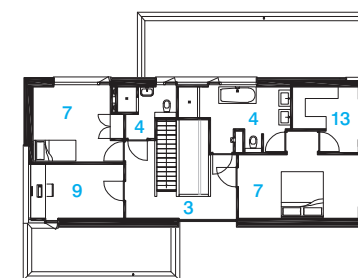
Walking through the house, one is continually surprised by the different views of the landscape. In every room the dialogue between building and landscape, and man and nature, is central. Sight lines from the front door further strengthen the relationship between the villa and the garden on three levels.



Lower ground floor



Ground floor



First floor

- | | | |
|------------|-------------|-------------------|
| 1 Garage | 6 Guestroom | 11 Dog kennel |
| 2 Storage | 7 Bedroom | 12 Kitchen/Dining |
| 3 Hall | 8 Living | 13 Walk-in-robe |
| 4 Bathroom | 9 Study | |
| 5 Sauna | 10 WC | |